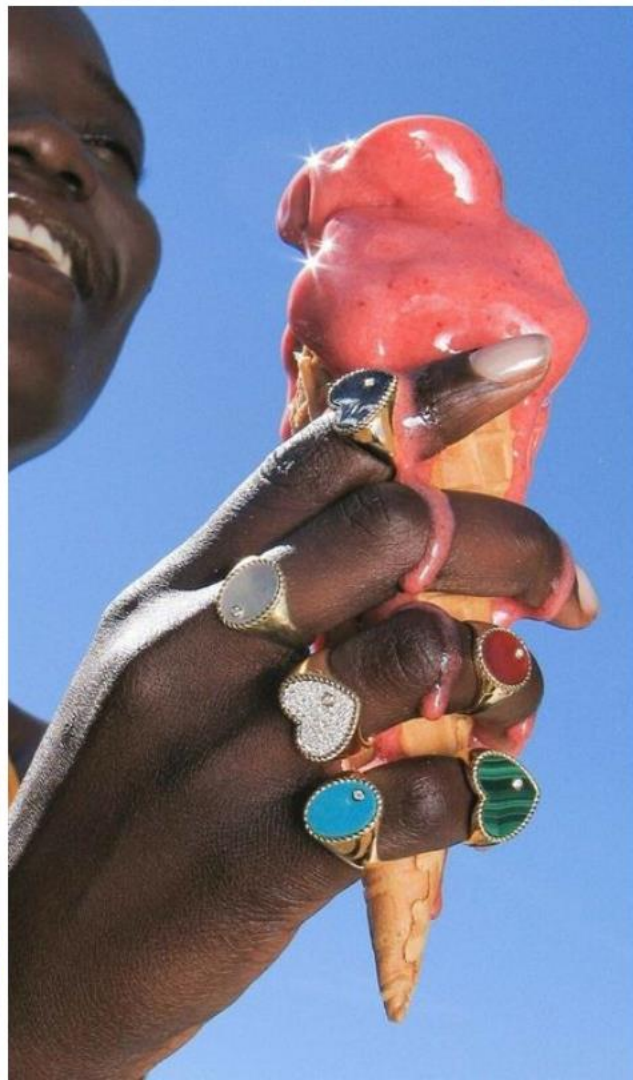




TROPICÁLIA

DESORDEM, CRIATIVIDADE, COLETIVIDADE!!!

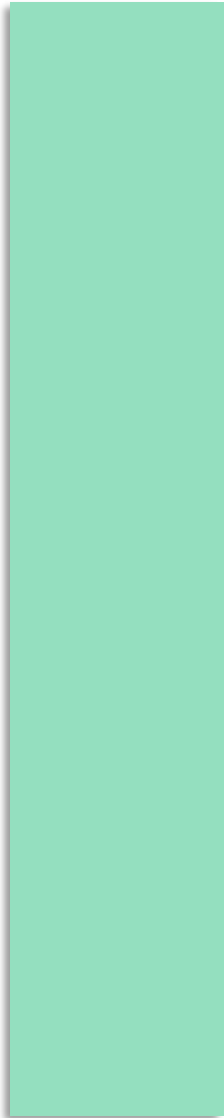
ESTA É A CASA DE INFLUÊNCIAS ANTAGONISTAS MARCANTES: HORA BRASILEIRO, HORA ESTRANGEIRO; HORA QUENTE E PRAIANO, HORA FRIO E SOMBRIO. MAS SUAS EXPRESSÕES PRINCIPAIS SÃO A ENERGIA E ALEGRIA, LIDERANDO A BUSCA POR SENTIR-SE MELHOR E ESCAPAR DO HOJE.



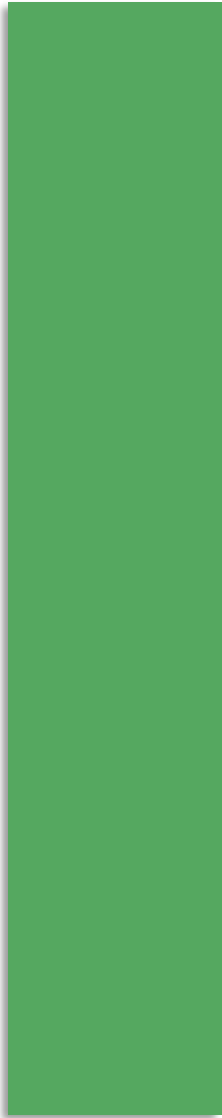


ENERGIA LÚDICA
DRAMA EXAGEROS
NÃO CONVENCIONAL INSTINTIVO
CAÓTICA ORIGINAL
TERNURA
LUDICIDADE ATREVIDOS
IMAGINAÇÃO ILIMITADA EXPONTAINIDADE
TOM DE TEATRALIDADE
EXPLORAÇÃO OUSADA ENERGÉTICO
IDENTIDADE AUTORREINVENÇÃO
MOMENTOS VIRAIS
INSTIGANTE

TROPICÁLIA | CORES: DESTAQUE



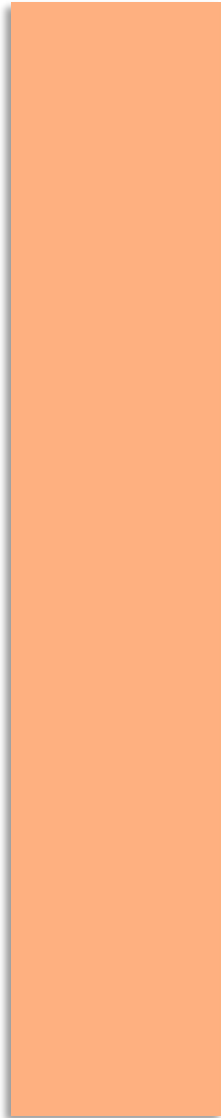
**JELLY
MINT**
13-5714



**RETRO
GREEN**
16-6339



**VIVID
YELLOW**
13-0858



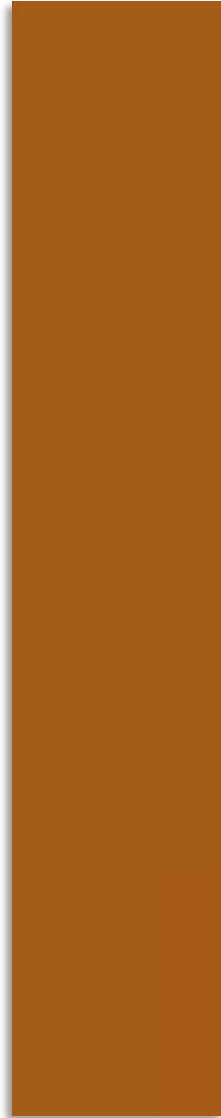
**PEACH
JELLY**
14-1231



**THRIFT
PINK**
16-1735



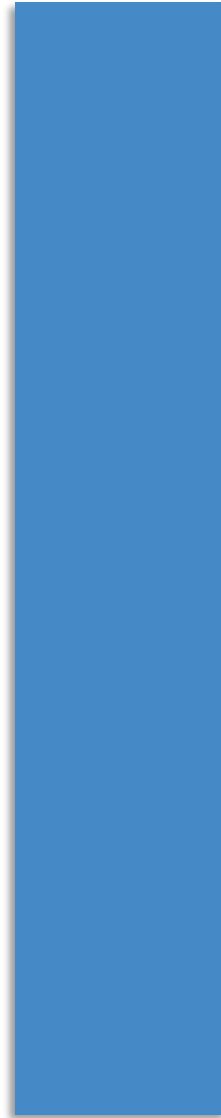
CRIMSON
18-1657



**RUSTIC
CARAMEL**
18-1163



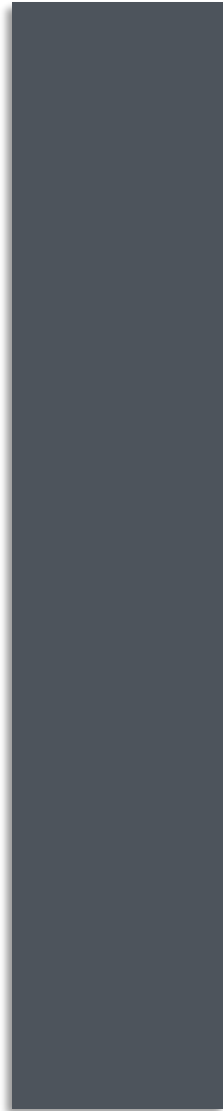
**ORANGE
PEEL**
16-1359



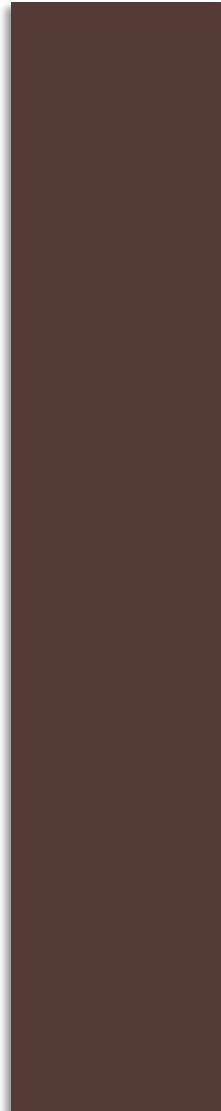
**TRANQUIL
BLUE**
17-4139



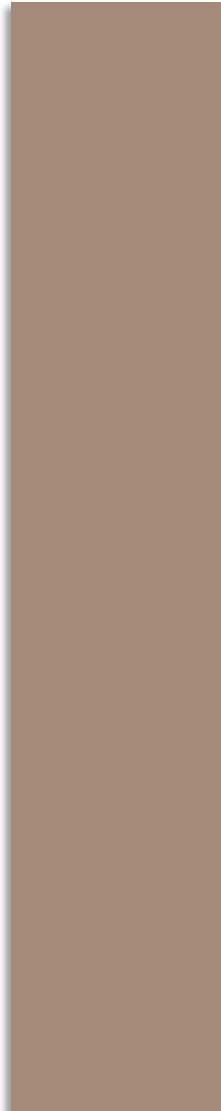
CIRCULAR
GREY
17-5104



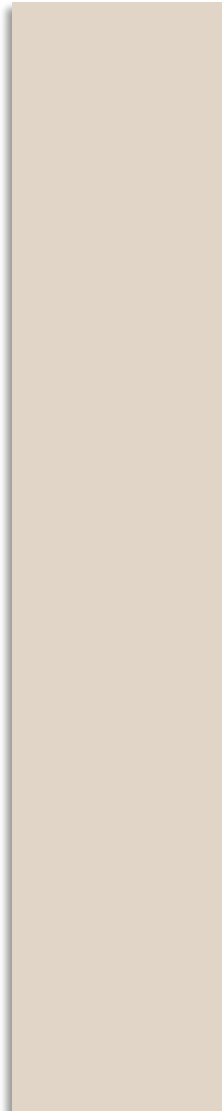
FUTURE
GREY
19-4215



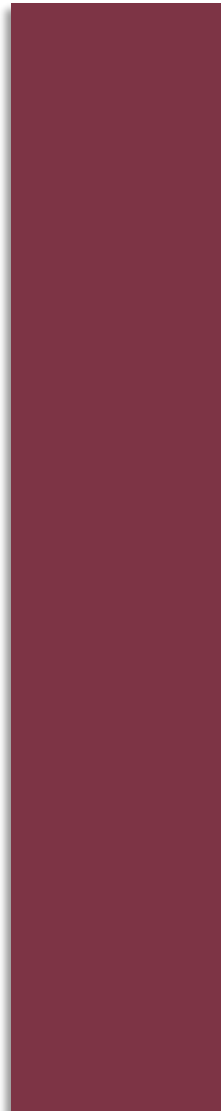
CHOCOLAT
E SAUCE
19-1215



TIMELESS
TAUPE
16-1318



CHALK
12-0304



CRANBERR
Y JUICE
19-1934

TROPICÁLIA | CORES: ENVOLVENTES



SEA KELP

18-0529

**PRIMAL
GREEN**

19-5920

**RETRO
BLUE**

15-4415

**BLUE
GLEAM**

14-4320

**CLASSIC
NAVY**

19-4029

**DUSTED
GRAPE**

18-3718

**ELECTRIC
FUCHSIA**

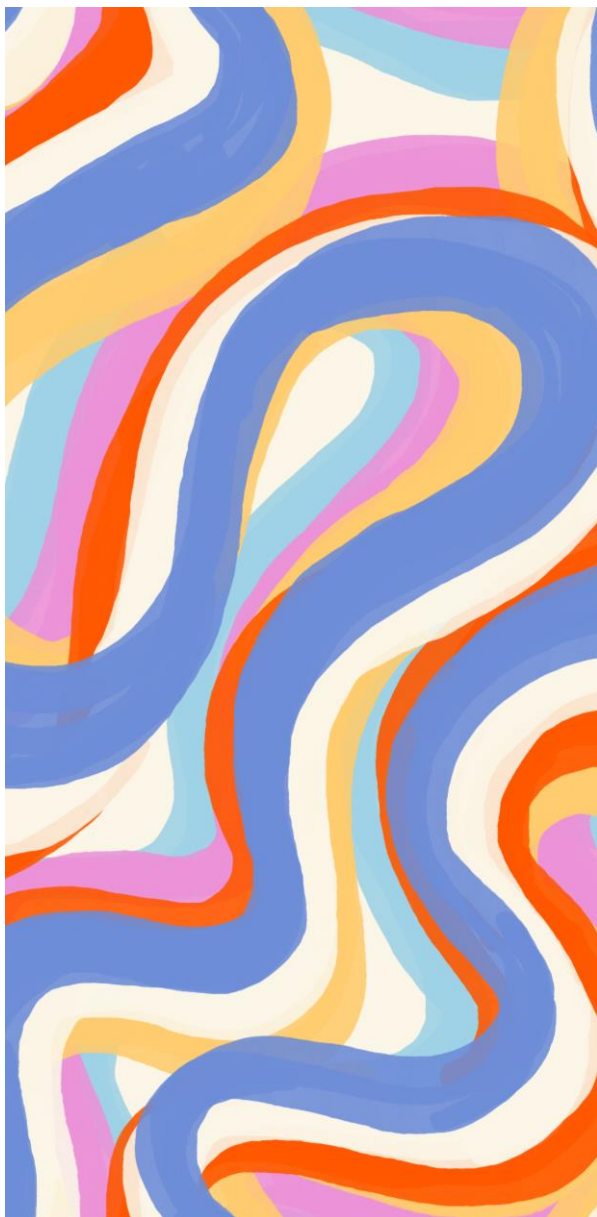
17-2624

**PINK
FROST**

13-2803

**CELESTIAL
YELLOW**

11-0618





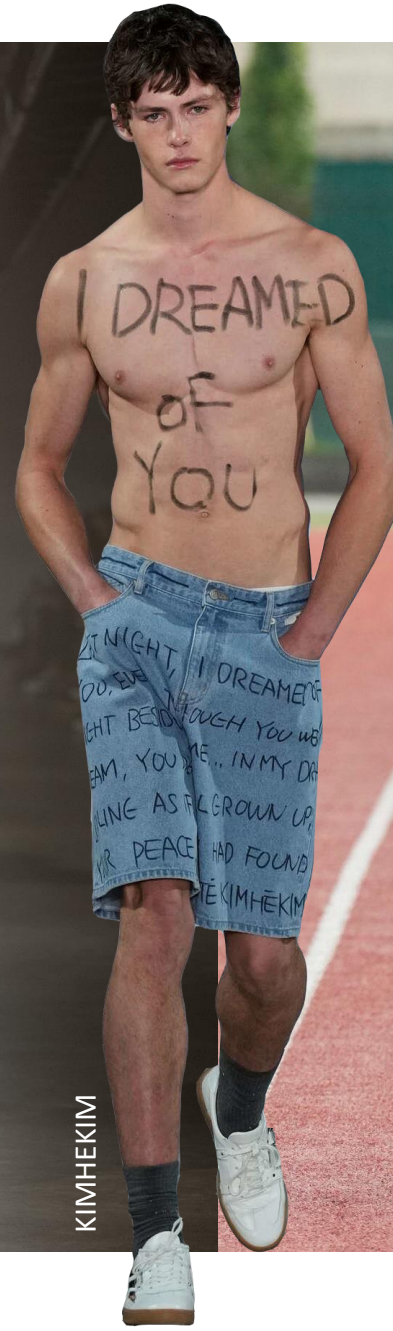
NATASHA ZINKO



BALENCIAGA



MM6 MAISON MARGIELA



KIMHEKIM



AVAVAV X ADIDAS



AVAVAV X ADIDAS

VETEMENTS

DIESEL

BALENCIAGA

MONIQUE FEI

TROPICÁLIA| AESTHETIC: NO MUNDO DA LUA



LUAR



JUNYA WATANABE



PIERRE CARDIN



BALMUNG



HARRI



JUUN. J



WALTER VAN BEIRENDONCK



COPERNI



MIU MIU



ANRELEASE



OTTOLINGER



SACAI



DIESEL



NATASHA ZINCO



JUNYA WATANABE

TROPICÁLIA | AESTHETIC: ENERGIA E VIBRAÇÃO



WEINSANTO

ZOMER



CASABLANCA



WHO DECIDES WAR



BALMUNG



TROPICÁLIA | AESTHETIC: NEM TÃO MINIMALISTA ASSIM



NATASHA ZINKO



PRADA



DIESEL



ACNE STUDIOS



ECKHAUS LATTA



SACAI



OFF-WHITE



JUUN. J



SUNNEI



BAUM UND PFERDGARTEN



KAMIYA



MARKING DISTANCE



NATASHA ZINCO



VAQUERA



(D|)VISION





ÉTUDES



BALENCIAGA



CASABLANCA



ROMEO HUNTE



AVAVAV X ADIDAS





AVENIR



AWGE



(D)VISION



MM6 MAISON MARGIELA



HENRIK VIBSKOV



FENG CHEN WANG



BALMUNG



NAMESAKE



RABANNE



SETCHU

TROPICÁLIA | AESTHETIC: SEGUE O JOGO



WILLY CHAVARRIA

OFF-WHITE

AVAVAV X ADIDAS

RHUDE

CASABLANCA



CASABLANCA

ROMEO HUNTE



UNTITLED & CO.



MIU MIU



PRIVATE POLICY





SHAPES





500/4491
WIKINGS

64% ALGODÃO; 18%
POLIÉSTER; 16% LIOCEL;
2% ELASTANO

MARAGNO



ZIMO

500/4554
TIPO MALHA
COLLOR

83% ALGODÃO; 15%
POLIÉSTER; 2% ELASTANO



ROMEO HUNTE



600/2199
HYBRID MAXSKIN
48% ALGODÃO; 52%
VISCOSE
BASE DIGITAL

PRIVATE POLICY

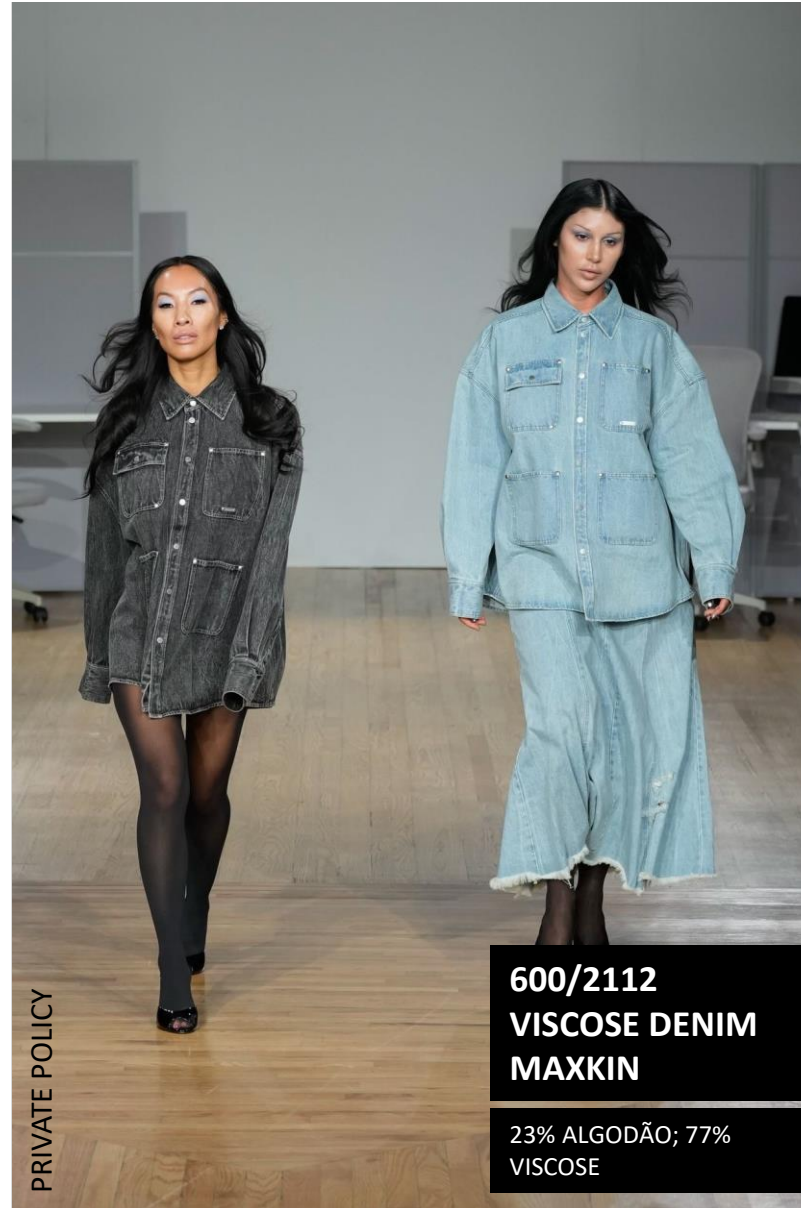


AKN VAS



600/2100
WILLOW
MAXSKIN
100% VISCOSE

PRIVATE POLICY





500/4689
VIPES

99% ALGODÃO; 1%
ELASTANO
AZUL BRILHANTE



500/4689
VIPES

99% ALGODÃO; 1%
ELASTANO
AZUL BRILHANTE

BALMUNG



FENG CHEN WANG

RABANNE



500/4689
VIPES

99% ALGODÃO; 1%
ELASTANO

MAITREPIERRE



500/4711
CIRCULAR IND
MEGAFELX

99% ALGODÃO; 1%
ELASTANO
CO RECICLADO + CO
DESFIBRADO
PRIMEIRO DENIM TODO
CIRCULAR

SIMONE ROCHAS



500/3959
MADUREIRA O.D.
BLACK

98% ALGODÃO; 2%
ELASTANO

DANIEL W. FLETCHER



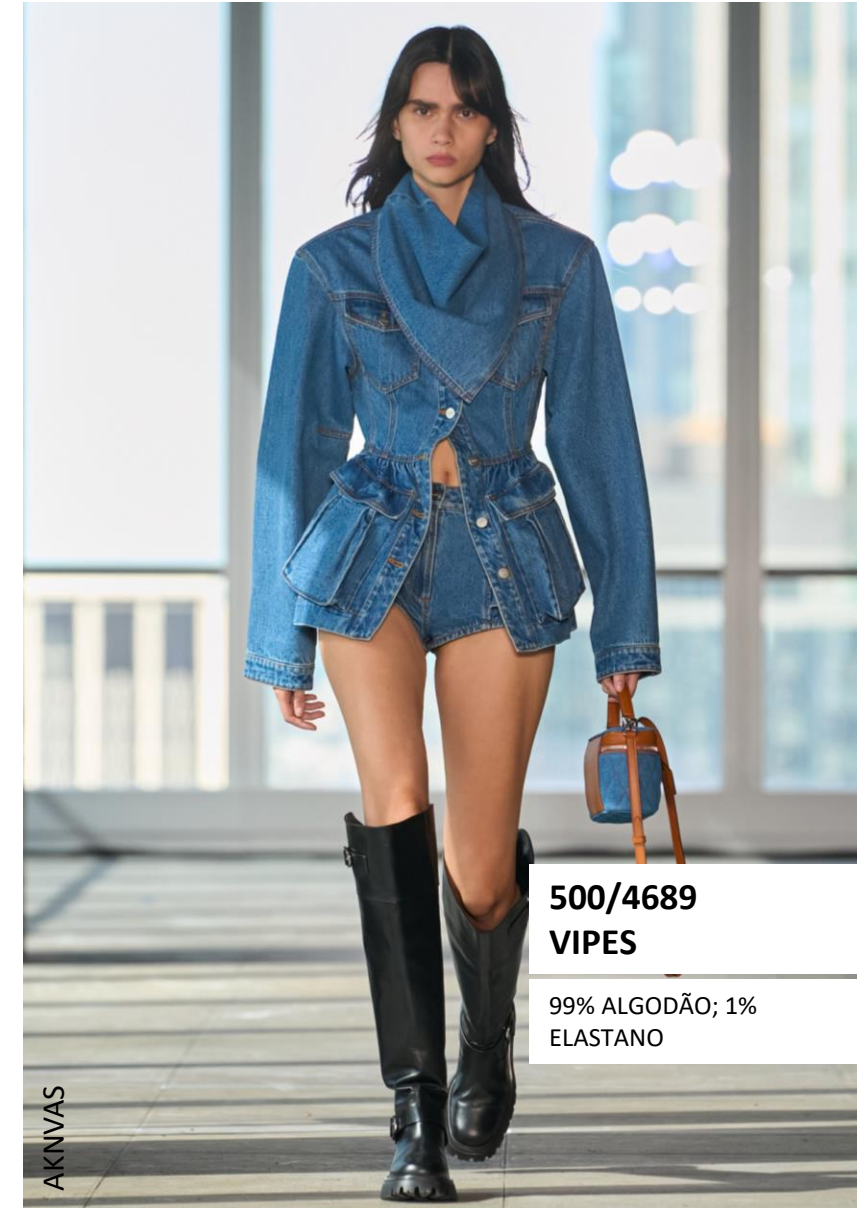
VETEMENTS



ACNE STUDIOS

600/2302
KABUL O.D.
BLACK

100% ALGODÃO
BASE DIGITAL



AKNVA

500/4689
VIPES

99% ALGODÃO; 1%
ELASTANO





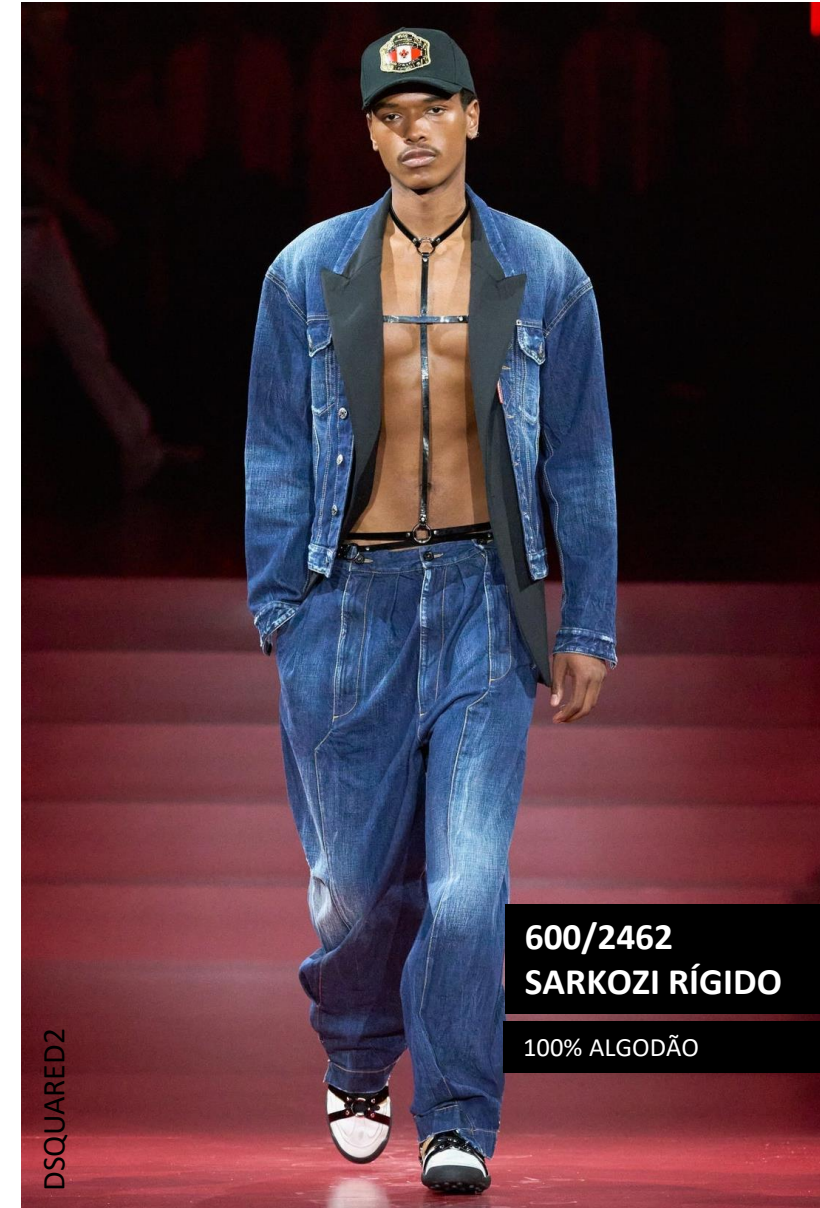
500/4689
VIPES

99% ALGODÃO; 1%
ELASTANO

ROMEO HUNTE



WEINSANTO



600/2462
SARKOZI RÍGIDO

100% ALGODÃO

DSQUARED2



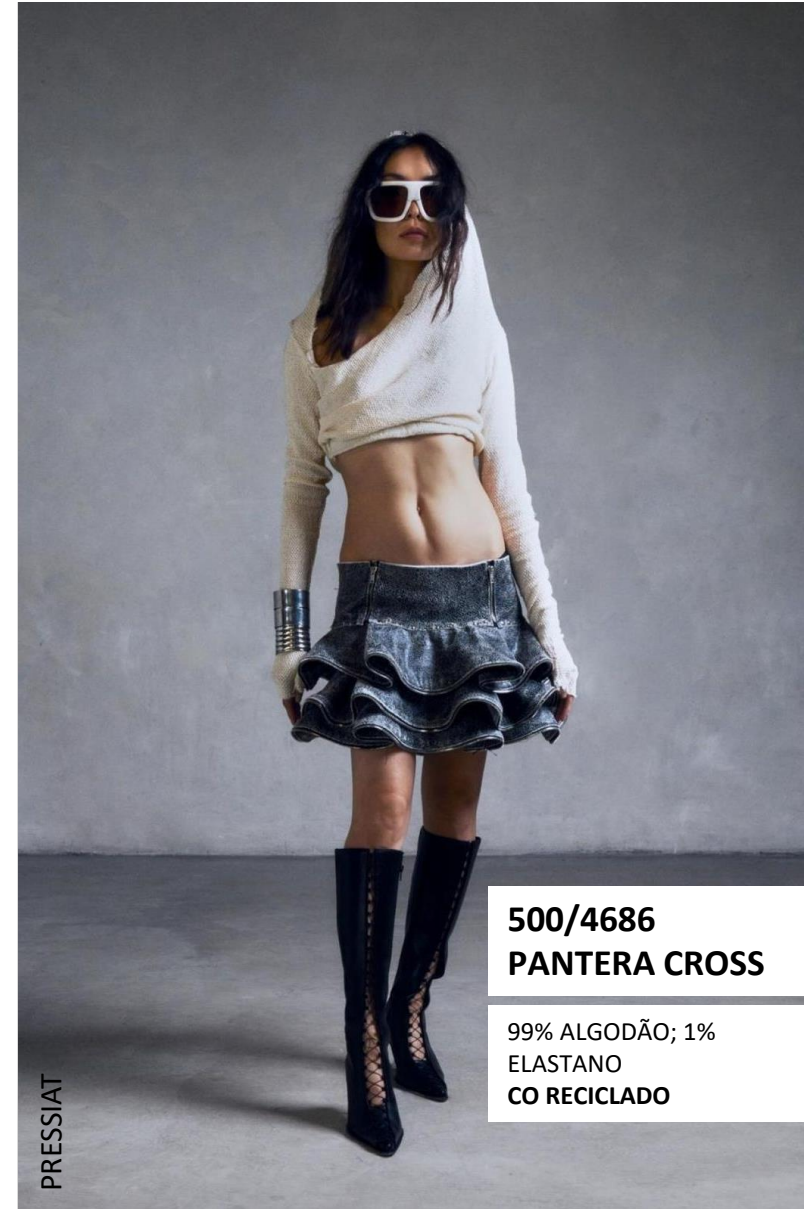
RABANNE



DURAN LANTIK

500/4711
CIRCULAR IND
MEGAFELX

99% ALGODÃO; 1%
ELASTANO
CO RECICLADO + CO
DESFIBRADO
PRIMEIRO DENIM TODO
CIRCULAR



PRESSIAT

500/4686
PANTERA CROSS

99% ALGODÃO; 1%
ELASTANO
CO RECICLADO

TROPICÁLIA | SHAPES: SAIA MIDI



ZOMER



ACNE STUDIOS

500/4689
VIPES

99% ALGODÃO; 1%
ELASTANO



VAQUERA



600/2389
FORASTEIRO
RÍGIDO
100% ALGODÃO



600/2547
FLORENCE PT
100% ALGODÃO
FLUIDEZ

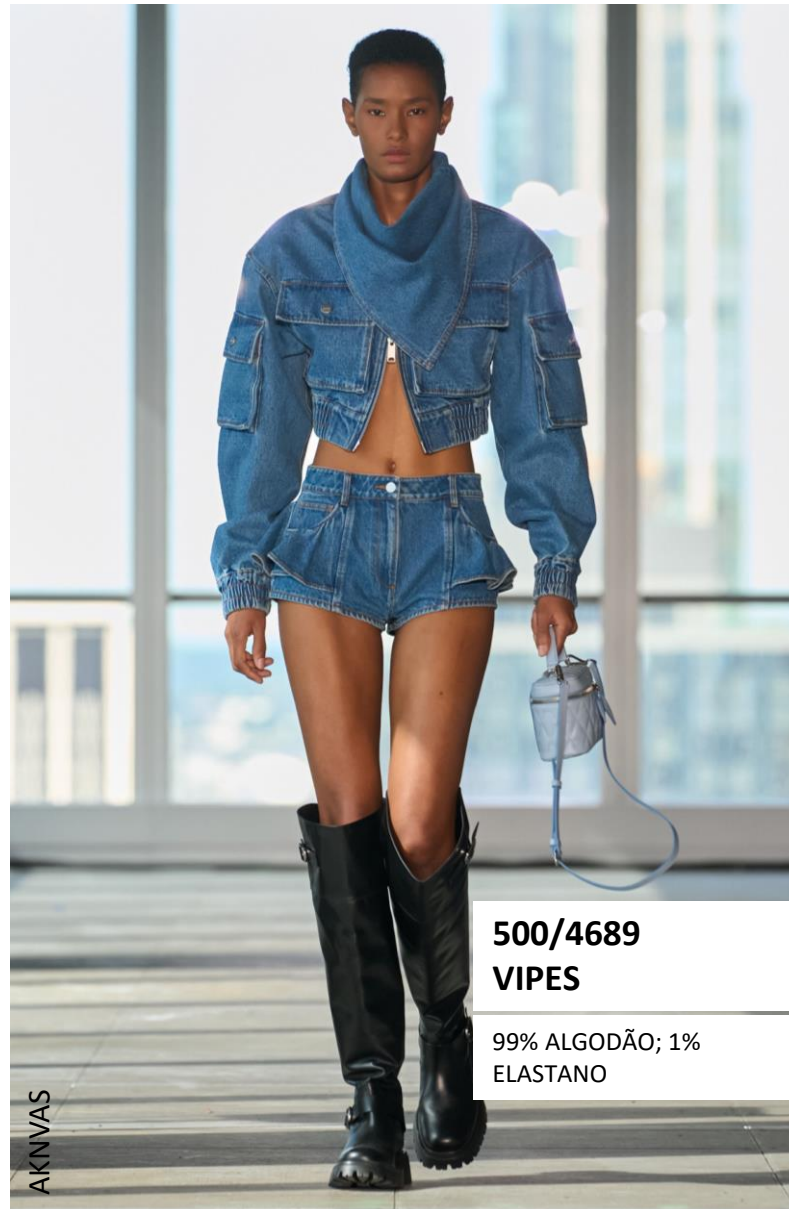


600/2542
FLORENCE
100% ALGODÃO
FLUIDEZ

FIORUCCI

JUUN.J

STAMIM





600/2542
FLORENCE

100% ALGODÃO
FLUIDEZ

MARAGNO



OTTOLINGER



600/2462
SARKOZI RÍGIDO

100% ALGODÃO

ROMEO HUNTE

TROPICÁLIA | SHAPES: SHORTS COLORIDO





600/2389
FORASTEIRO
RÍGIDO

100% ALGODÃO
BASE DIGITAL



500/4711
CIRCULAR IND
MEGAFELX

99% ALGODÃO; 1%
ELASTANO
CO RECICLADO + CO
DESFIBRADO



VAQUERA

VETEMENTS

CHARLES JEFFREY LOVERBOY



500/4590
MONARCA DUO
CORE VINTAGE

97% ALGODÃO; 2%
ELASTOMULTIÉSTER; 1%
ELASTANO



COACH

500/3959
MADUREIRA O.D.
BLACK

98% ALGODÃO; 2%
ELASTANO



OTTOLINGER

MAISON MARGIELA



MAITREPIERRE

500/4689
VIPES

99% ALGODÃO; 1%
ELASTANO



600/2549
EMPILHADO

83% ALGODÃO; 10%
MODAL; 7% VISCOSE

CHARLES JEFFREY LOVERBOY

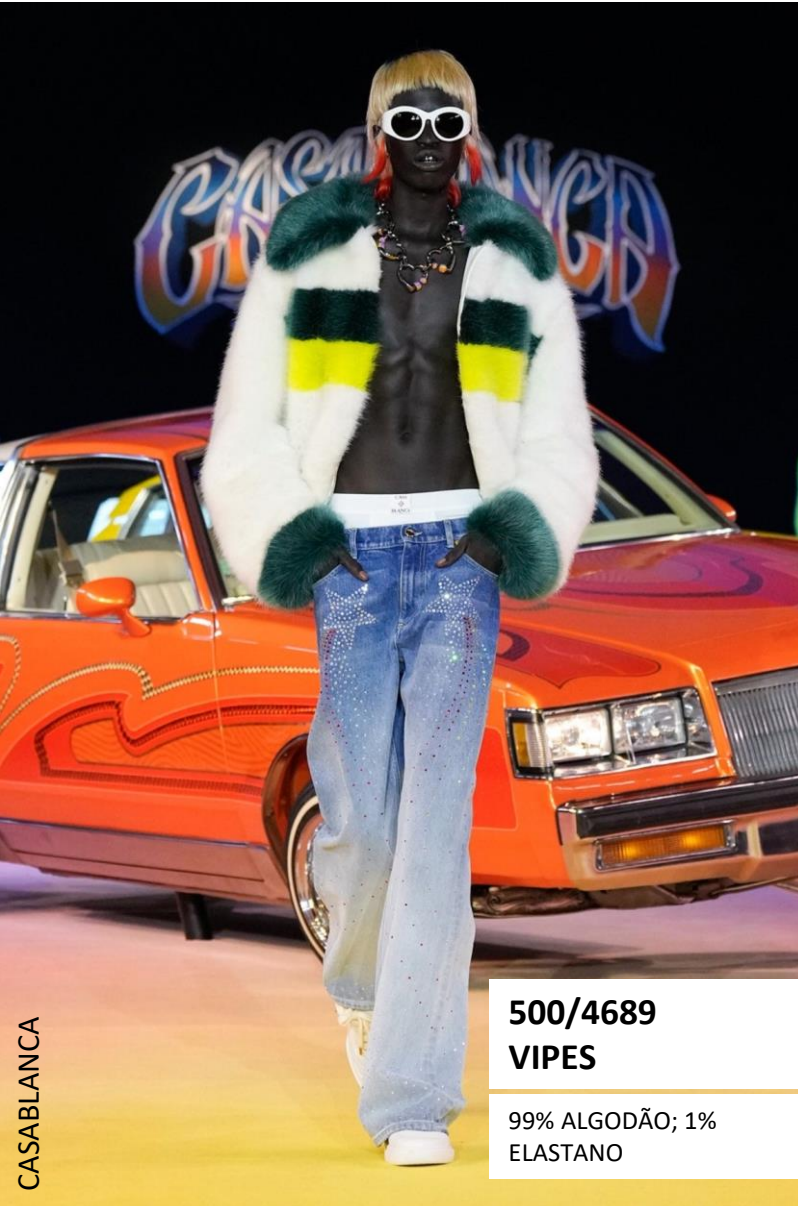


PRESSIAT

600/2462
SARKOZI RÍGIDO

100% ALGODÃO





500/4689
VIPES

99% ALGODÃO; 1%
ELASTANO

CASABLANCA



600/2302
KABUL O.D.
BLACK

100% ALGODÃO

PRIVATE POLICY



MASU



ZOMER



600/2389
FORASTEIRO
RÍGIDO

100% ALGODÃO
BASE DIGITAL

KIMHEKIM



600/2462
SARKOZI RÍGIDO

100% ALGODÃO

AKNVA



500/4681
HERMETO

98% ALGODÃO;
2%ELASTANO
SUJINHO



UNTITLED & CO.



600/2462
SARKOZI RÍGIDO

100% ALGODÃO

NAMESAKE



500/4681
HERMETO

98% ALGODÃO;
2%ELASTANO
SUJINHO

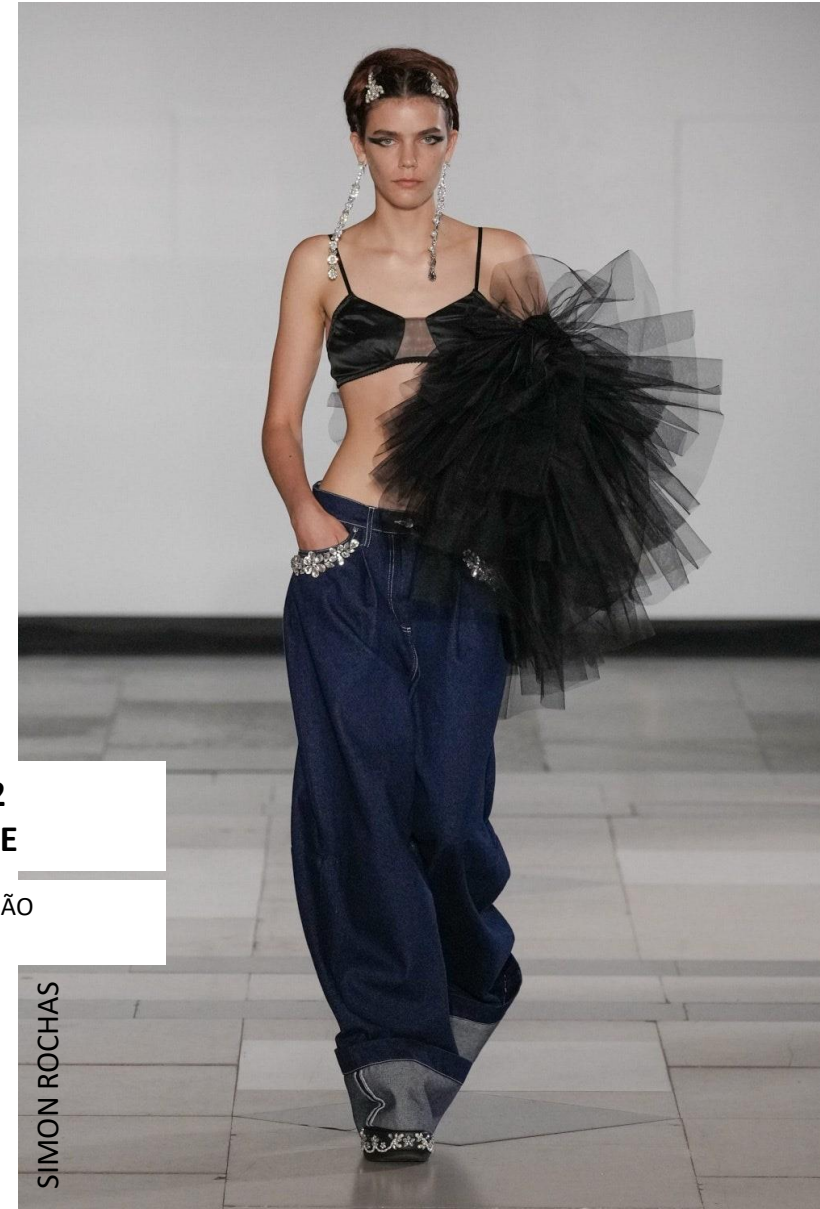
ÉTUDES



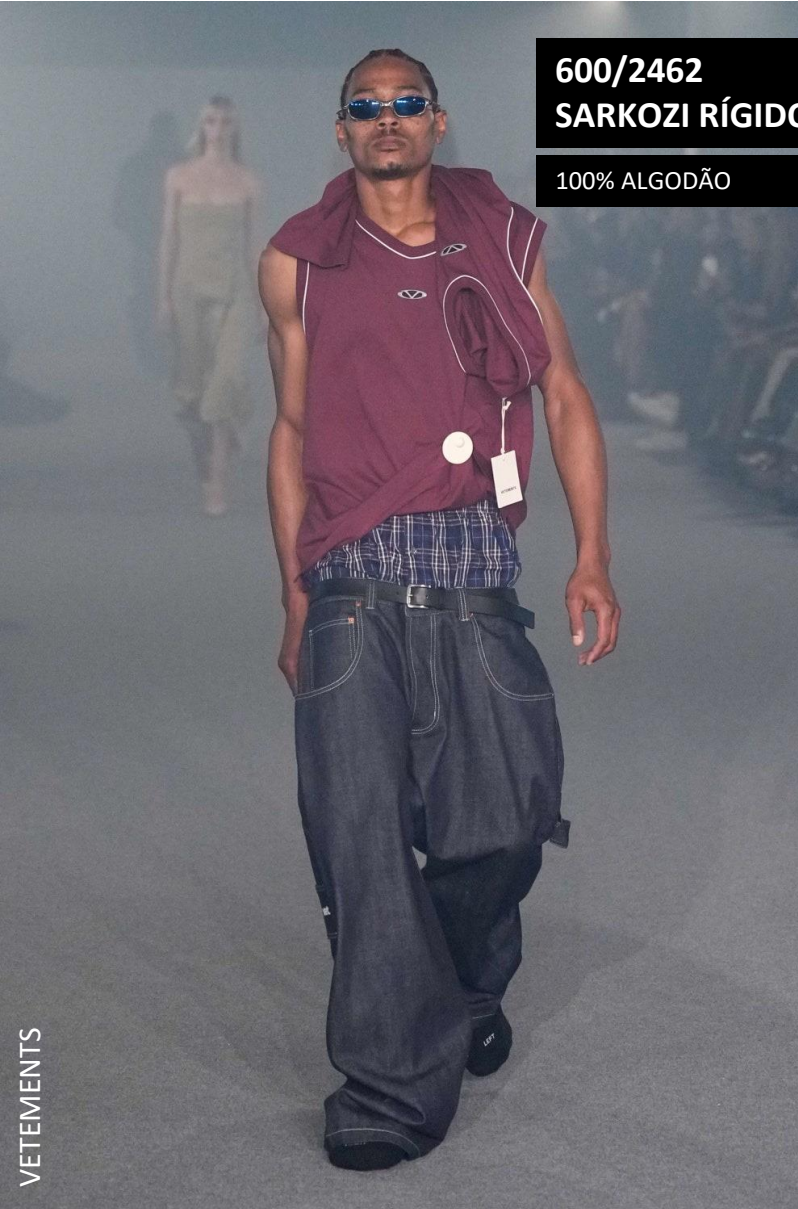
600/2542
FLORENCE

100% ALGODÃO
FLUIDEZ

SANKUJANS



SIMON ROCHAS



600/2462
SARKOZI RÍGIDO
100% ALGODÃO



VAQUERA



500/4689
VIPES

99% ALGODÃO; 1%
ELASTANO

CASABLANCA



CHARLES JEFFREY LOVERBOY



600/2549
EMPILHADO

83% ALGODÃO; 10%
MODAL; 7% VISCOSE



DIESEL

600/2542
FLORENCE

100% ALGODÃO
FLUIDEZ



PRIVATE POLICY

600/2302
KABUL O.D.
BLACK

100% ALGODÃO



600/2199
HYBRID MAXSKIN

48% ALGODÃO; 52%
VISCOSE
BASE DIGITAL

AKNVA



500/4711
CIRCULAR IND
MEGAFELX

99% ALGODÃO; 1%
ELASTANO
CO RECICLADO + CO
DESFIBRADO
PRIMEIRO DENIM TODO
CIRCULAR

MASHA POPOVA



PRIVATE POLICY

